



INCLUDE

INTERDISCIPLINARY NETWORK OF SPECIAL &
INTERCULTURAL EDUCATION

About

INCLUDE is a Scientific Association.

Year of foundation: 2011

**INCLUDE is working towards an
INCLUSIVE COMMUNITY.**

**Investigates, implements and
evaluates inclusive practices that
fosters mutually beneficial
interactions between children of
both typical development and
those with disabilities or different
socio-cultural origin.**

Supports parents and school teachers.



About



INCLUDE promotes
Social cohesion
and solidarity
in neighborhood
and community.

INCLUDE promotes
positive social attitudes
towards ethnicity
and diversity

INCLUDE organises
innovative Inclusive
activities that fosters
all children's
emotional, cognitive,
psychomotor and
social skills.

People



Members

Parents, teachers, students, mental health professional, artists, doctors, every citizen who wants to contribute to an INCLUSIVE SOCIETY!

Board of Directors

President

Dr. Andromachi Nanou,
Inclusive Education Researcher

Members

Z. Samoladas, film director
A. Maistrellis Instruc., Phys. Edu.
G. Damaskinidis, Prof. Ed. Reshearch

Scientific Committee

Astaras, A. ICT Prof

Oikonomou A. Prof
ASPAITE
Psychologist

A.Giatrakou, MA
Special educator

Erif.Sakalidou
Psychologist MA

Location



- ▶ “School for all” TOKEI MARU
- ▶ Designed according to the principles of Universal Design.
- ▶ Independent site of 120 sqm, within the complex of a public school, surrounded by a lush garden with trees and flowers

“School for All” TOKEI MARU

Monument of Solidarity Painted by Athanasius Pallas



IT is dedicated to the unknown Japanese captain who threw his precious commodities in the sea to save Greek refugees from the destruction of Smyrna in 1922.

This history event first was published in «Atlanta Journal-Constitution » on 15 of October after information provided by George Horton, the American Consul at Smyrna, on his telegram to the US Department of State.

Location

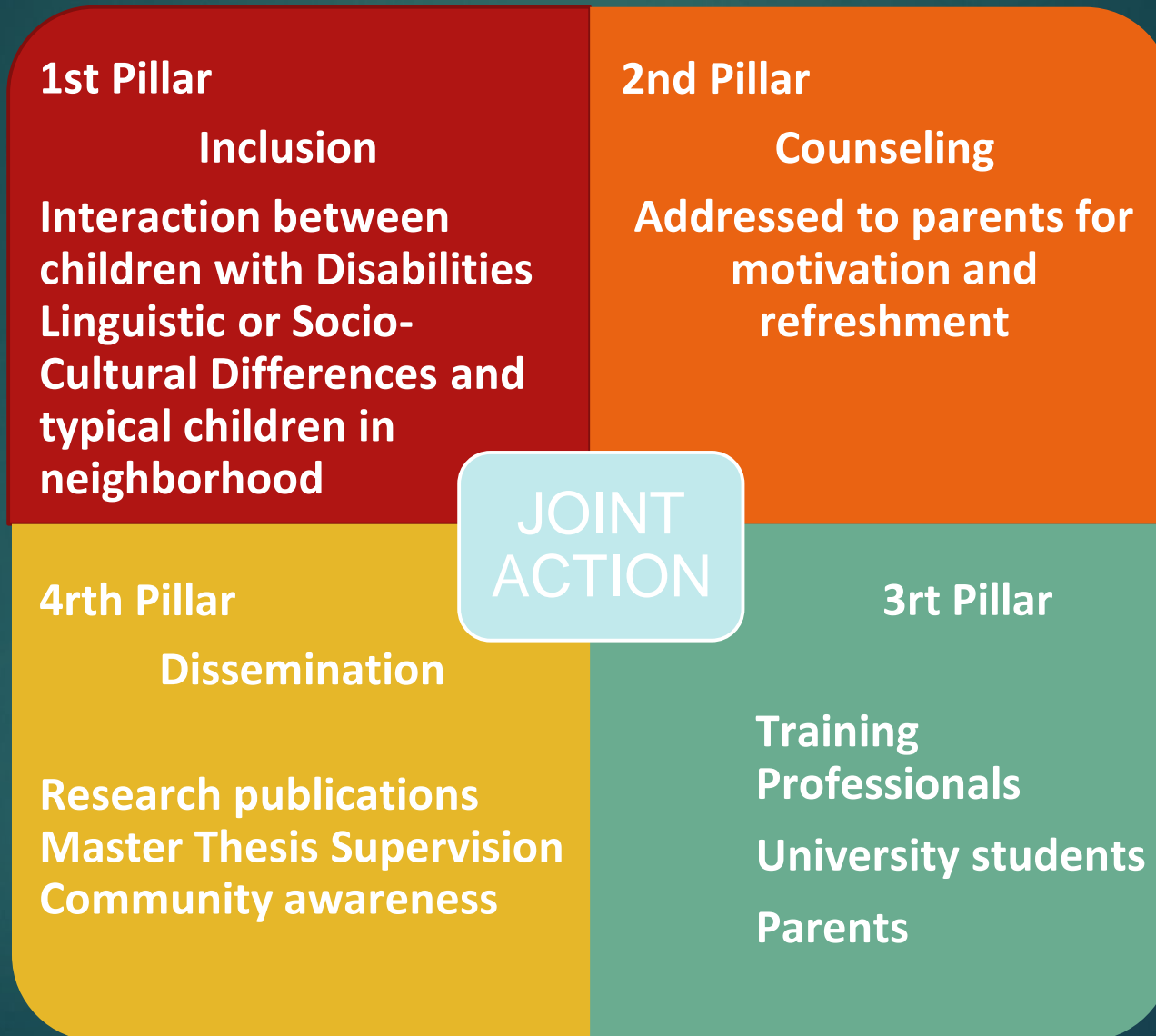
include 



The “School for All”
designed by the
principles of Universal
Design, UDL.

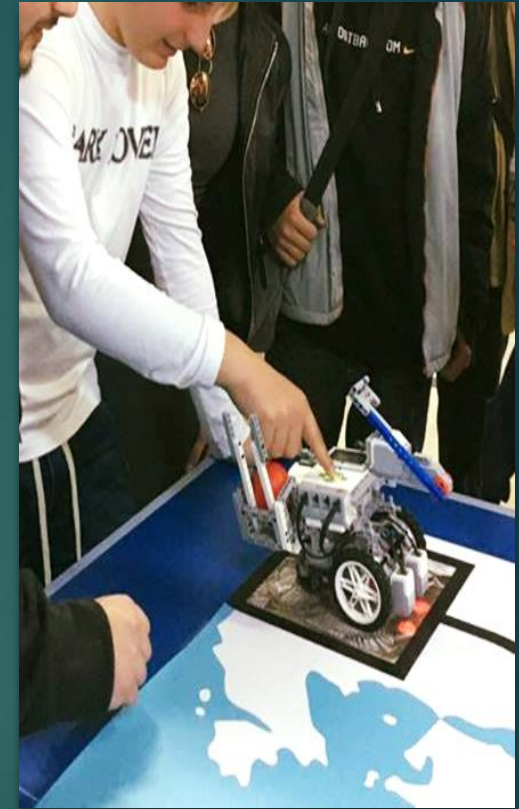


4-Pillars Activities



Robotics laboratory

1rts Pillar
Inclusive Activities
“School for All “ INCLUDE



ΙΔΡΥΜΑ ΣΤΑΥΡΟΣ ΝΙΑΡΧΟΣ
STAVROS NIARCHOS FOUNDATION

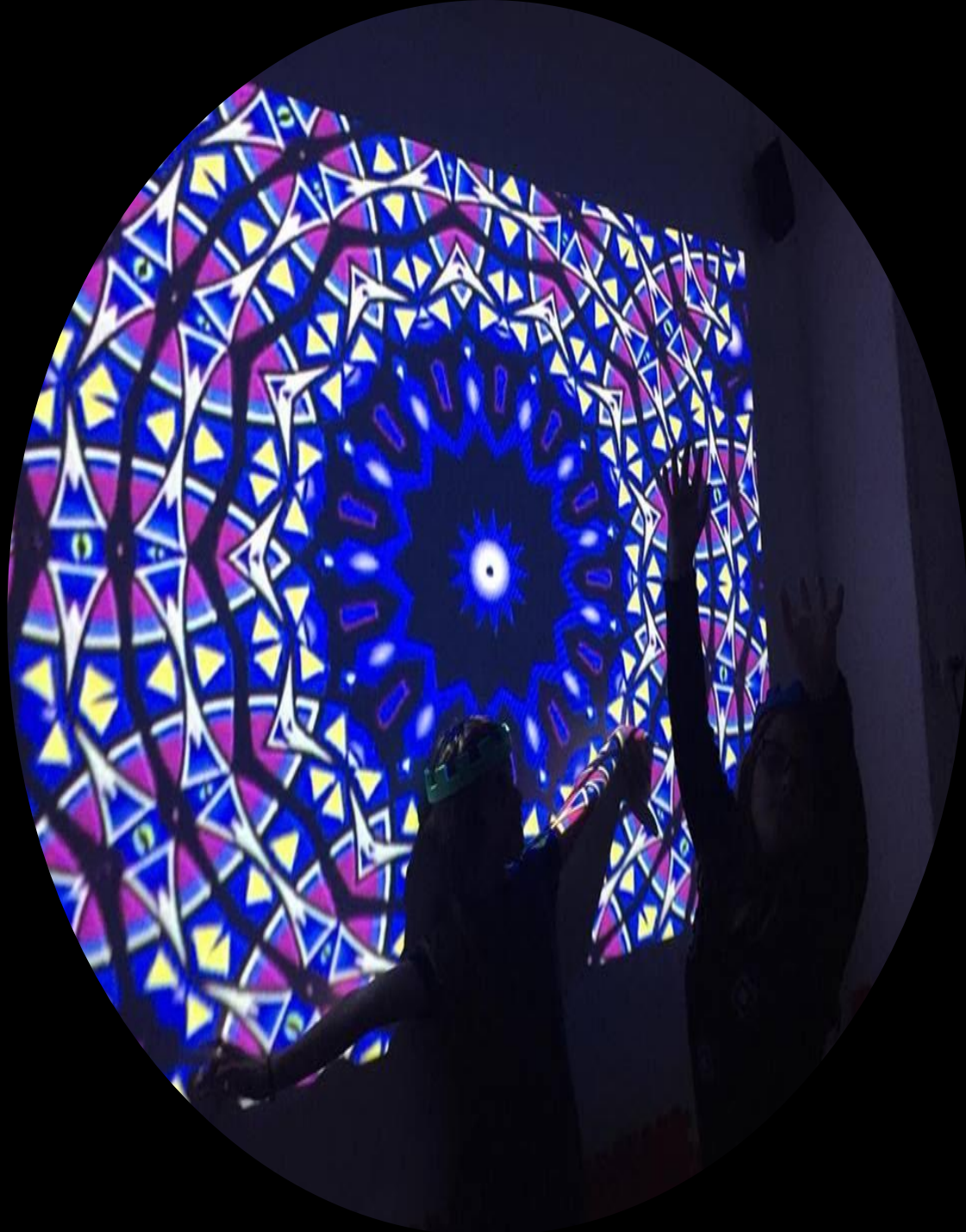


Interactive equipment for SEN children

**1sts Pillar
Inclusive Activities
“School for All “ INCLUDE**



ΙΔΡΥΜΑ ΣΤΑΥΡΟΣ ΝΙΑΡΧΟΣ
STAVROS NIARCHOS FOUNDATION



Snoezelen room for sensory integration and play

1rsts Pillar

Inclusive Activities

“School for All “ INCLUDE



ΙΔΡΥΜΑ ΣΤΑΥΡΟΣ ΝΙΑΡΧΟΣ
STAVROS NIARCHOS FOUNDATION



Musical equipment and sound system

1rsts Pillar
Inclusive Activities
“School for All “ INCLUDE

ΙΣΝ / SNF

ΙΔΡΥΜΑ ΣΤΑΥΡΟΣ ΝΙΑΡΧΟΣ
STAVROS NIARCHOS FOUNDATION

1rts Pillar
Inclusive Activities
“School for All “ INCLUDE

Special
mattresses.
Other uses: yoga,
dancing, etc.



Inclusive Judo Gym



Children's
Interaction
activities
through
techniques of
relaxation,
concentration
and trust

1rta Pillar
Inclusive Activities
"School for All " INCLUDE



2nd Pillar
Parents Support
“School for All “ INCLUDE

Encouraging parents to participate in the wider community and feel free and uninhibited regarding their children’s special needs.

Engaging members of the local community to sensitize them towards the needs of others and remove misconceptions and prejudice.



3rt Pillar

Training

**Addressed to:
Special Education
Teachers,
Mental Health
Professionals,
Lawyers, Judges and
Students**



ΚΥΚΛΟΦΟΡΕΙ

από τις Εκδόσεις ΓΡΑΦΗΜΑ

ΖΗΤΗΣΤΕ ΤΟ ΣΕ ΟΛΑ ΤΑ ΒΙΒΛΙΟΠΩΛΕΙΑ

«από το σχολείο σε
μία κοινωνία για
όλους»

ΑΠΟ ΤΗΝ ΕΙΔΙΚΗ ΑΓΩΓΗ ΣΤΗ ΣΥΜΠΕΡΙΛΗΠΤΙΚΗ ΕΚΠΑΙΔΕΥΣΗ

Από το σχολείο σε
μία κοινωνία για όλους

Συγγραφείς

Κ. Αβραμίδης, Α.Σ. Αντωνίου, Α. Γεωργιάδης, Δ. Γεωργιάδης, Μ. Κωνσταντίνου,
Σ. Λαζαρίδης, Γ. Σουφροπούλου, Γ. Καραμύλη, Α. Κολοβέτη, Ν. Κωνσταντίνου,
Γ. Ανδρεακίδη, Κ. Μπακοπούλου, Γ. Μπακοπούλου, Α. Νάνου,
Α.Σ. Παύλου, Μ. Παυζάνη, Σ. Ραβάνης, Σ. Τσιλιανίδης,
Σ. Τσιλιανίδης, Ε. Φωτιάς, Α. Χαριστοπούλου, Κ. Σαρδού

Επιμελητής

Αθανάσιος Νάνου
Μέλος Συνεδρίου Επιστημονικών
Ανταρτών Γραβήτης
Ακαδημία Βελιγράδιου

ΕΙΣΗΓΗΤΡΙΑ:

Δρ. Νάνου Ανδρομάχη, Ειδική παιδαγωγός, Πρόεδρος του INCLUE.

ΟΜΙΛΗΤΕΣ:

Δρ. Μαρίνα Πατσίδου - Ιλιόδου, Σχολική Σύμβουλος Ειδικής Αγωγής Ανατολικής Θεσσαλονίκης.

Αικατερίνη Χαριστοπούλου, M.ed, M.sc, Εκπαιδευτικός, Σύμβουλος Επαγγελματικού Προσανατολισμού, Πρόισταμενη της Εκπαιδευτικής Ραδιοτηλεόρασης του ΥΠΑΙΘ.

Ιωάννης Συμβρακόκης, M.ed Εκπαιδευτικός Ειδικής Αγωγής, Διευθυντής 1^{ης} Ειδικού Σχολείου Δραπετσώνας.

ΠΑΡΟΥΣΙΑΣΗ ΒΙΒΛΙΟΥ

Πέμπτη 11 Δεκεμβρίου 2014, Ώρα: 7.00 μ.μ.

Βιβλιοκαφέ Έναστρον

Σόλωνος 101, Αθήνα

Εκδόσεις Γράφημα | www.grafima.com.gr

Εξουκουίου 5, ΤΚ 54035, Θεσσαλονίκη
Τηλ/Fax: 2310 248272, fax: 6932 825588
E-mail: grafima@gmail.com, grafima@grafima.com.gr

4rth Pillar Dissemination

Book:

From Segregated to Inclusive Education

Nanou, A. (2019). Differentiation and flexibility in "a school for all". The voice and Vision of Special Education. Available from: <https://www.specialeducation.gr/frontend/article.php?aid=248&cid=65>

Nanou, A. & Patsidou, M. (2017). Exploring the characteristics of an effective educational model in a school for all. *Issues in Special Education*, 78, 20-28.

Nanou A., Patsidou E. M. & Raptopoulou A. (2015). Include: a model of inclusive education policy in the neighbourhood. In G. Aleksandratos, T. Armodios & T. Arvaniti - Papadopoulou (eds) Conference proceedings 2nd International Conference National Union of School Directors (pp. 824-831) (2nd vol.). Athens: National Union of School Directors.

Nanou, A., Gavriilidou, K. & Raptopoulou, A. (2014) Improving interactions between children with and without special educational needs in the neighborhood. A pilot action research. *Issues in Special Education*, 64, 58-77.

Nanou A, & Garanis A. (2013) Training SEN Parents and Teachers for Refreshment, (Eds). INCLUDE, Grundtvig partnership.

Nanou, A., Patsidou, M., A Garanis. & Chariopolitou K. (2013) (eds). From special education to inclusive education. From school to a society for all. Thessaloniki: Grafima.

Scientific researches conducted in the context of Include

Patsidou-Eliadou, M., Nanou, A., Gavriilidou, C. & Raptopoulou A. (2015) Developing social skills in children on the spectrum through participation in educational robotics team. In G. Aleksandratos, T. Armodios & T. Arvaniti - Papadopoulou (eds) Conference proceedings 2nd International Conference National Union of School Directors (pp. 764-774) (2nd vol.). Athens: National Union of School Directors.

Raptopoulou, N., Tsiomi, E., Nerantzis, N. & Nanou, A. (2017). Development of collaboration strategies in an educational robotics group of teenagers that includes children with Asperger syndrome. *Issues in Special Education*, 78, 8-20.

Sakalidou, E., Stathopoulou, R., Gavriilidou, C. & Nanou, A. (2015) Good practices for improving interactions between children with and without special educational needs in the neighborhood. In G. Aleksandratos, T. Armodios & T. Arvaniti - Papadopoulou (eds) Conference proceedings 2nd International Conference National Union of School Directors (pp. 781-788) (2nd vol.). Athens: National Union of School Directors.

Tzaferi P. Tsiomi E. Eliadou M. Vasileiou C. (2015) Shaping an inclusive climate in the neighborhood for preschool and primary school children through educational robotics. A pilot action-research. In G. Aleksandratos, T. Armodios & T. Arvaniti - Papadopoulou (eds) Conference proceedings 2nd International Conference National Union of School Directors (pp. 799-804) (2nd vol.). Athens: National Union of School Directors.

Postgraduate theses conducted in the context of Include

Dafni, K. (in progress). Learning strategies intervention programme for child with learning difficulties and difficulties of social adjustment. Master Programme Special Inclusive Education. Department of Education Sciences. European University of Cyprus.

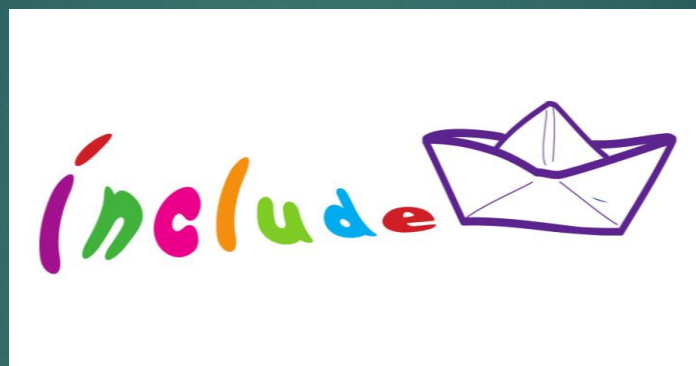
Antoniou E. (2018) Design and implementation of music education inspection program to improve emotional reactions and social behavior of a child with emotional and conductory type difficulty. Master Programme Special Inclusive Education. Department of Education Sciences. European University of Cyprus.

Kotou, D. (2017). Development of a social and communication skills intervention program for ADS children through educational robotics Master Programme Special Inclusive Education. Department of Education Sciences. European University of Cyprus .

Makatounaki E., (2018). The music improvisation as a mean of collective development of critical thought and creativity. Department of Music Art Aristotle University of Thessaloniki.

Panagiotou G.,(2018). Creative writing intervention program in a child with disorder through educational robotics. Department of pedagogical studies. Florina: University of Western Macedonia.

Supporters



VOLUNTEERS-BASED FUNDING

Supporters



FACILITY
CONCESSION
MUNICIPALITY OF
THESSALONIKI



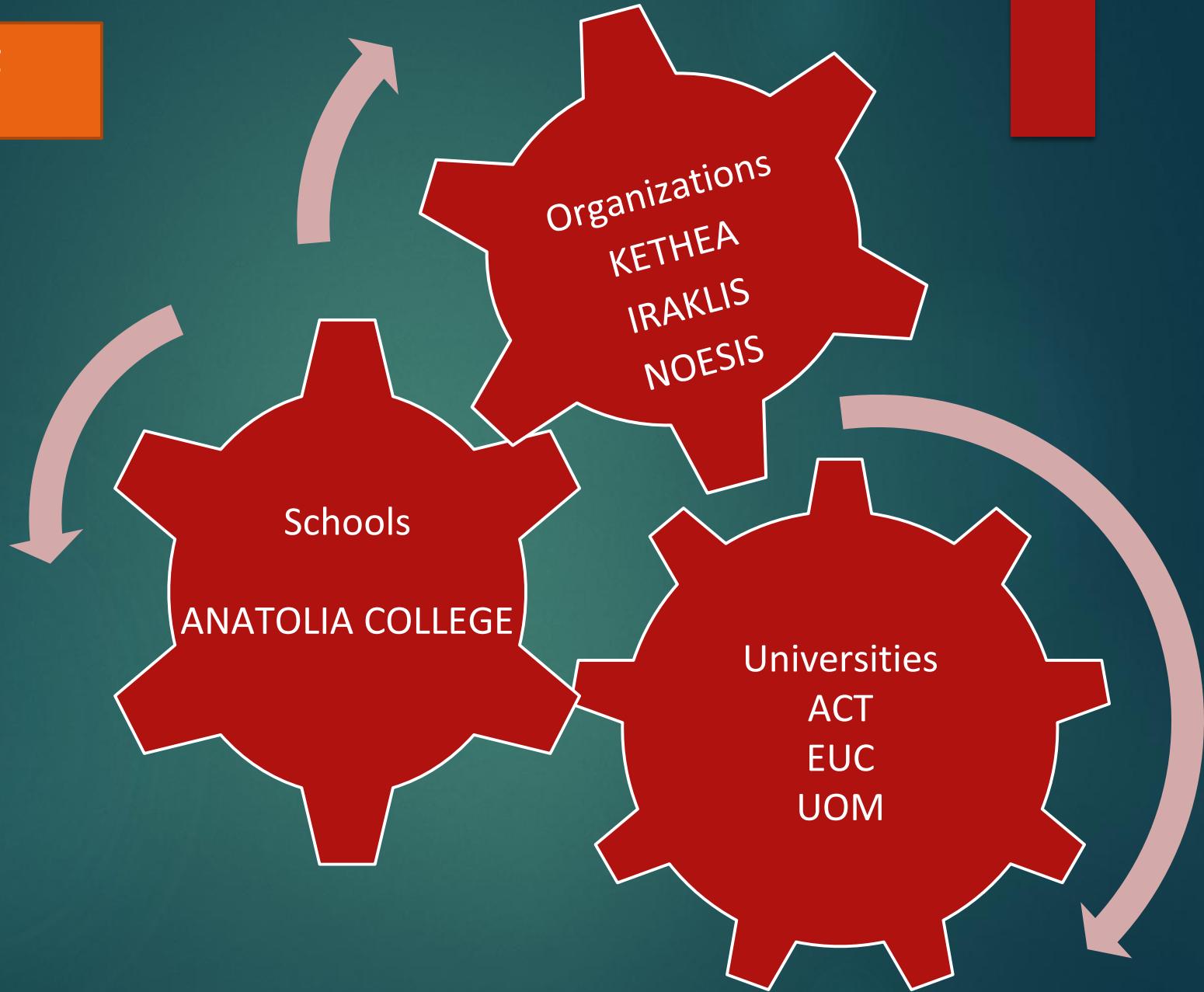
EQUIPMENT
DONATION OF THE
STAVROS NIARCHOS
FOUNDATION



FUNCTION
VOLUNTARY OFFERS
AND MENIAL
MEMBERSHIP FEES

SCHOOL FOR ALL SUPPORTERS

**Supporting
Network**



Results after 5 years

1st & 2nd Pillar

- 1600 hours of Child and Parent Family Support voluntary
- 9,000 hours: 4,500 from specialized volunteers and 4,500 hours from non-specialized volunteers

3 rd Pillar

- 1920 hours of teacher training on Inclusive practices
- Training of 50 Members of INCLUDE in Counseling Strategies per year
- Judo Training in KODOKAN JUDO JAPAN
- 80 hours training of volunteers in robotics EV3
- 80 hours training on NGO's organization

4th Pillar

- Collective Volume on Education in a "School for All"
- 2 international conferences and several workshops (23)
- Publications in scientific journals
- Participation in scientific conferences

Key Milestones

Represents
Greece in the
World JUDO
Federation
WJF:
<http://www.judoforall.org/>

Member of
Taffisa:
<http://www.tafisa.net/index.php/programs-events/tafisa-world-sport-for-all-games>

Member of
European
Makers
Movement:
<http://europeanmakerweek.eu/events>

Member of
Scientix :
<http://www.scientix.eu/web/guest/about>

Twinned
with
SUDOKAN
FOUNDATION
IN OSAKA
Japan



EU Programme	Year	Project Identification or Contract Number	Applicant/beneficiary name
LLP- Grundtvig Partnerships	2011	2011-1-TR1-GRU06-24814 1	Mamak İlçe Milli Eğitim Müdürlüğü
Youth in Action 1.1	2012	TR-11-E397-2012-R2	Mamak İlçe Milli Eğitim Müdürlüğü
Youth in Action 1.1	2014	TR-13-E678-2014-R4	Çorum Hitit Dernekleri Federasyonu
Erasmus+ Strategic Partnerships for Adult Education	2018	2018-1-PL01-KA204-051126	ECOINSTITUTO ITALY
Erasmus+ Strategic Partnerships for Adult Education	2018	2018-1-IT02-KA204-048479	Wyższa Szkoła Pedagogiczna im. Janusza Korczaka w Warszawie

INCLUDE

School for All : TOKEI MARU

Leventi/ Ag. Spyridonos 2
55337 Thessaloniki
Province of Macedonia / Greece

Web: <http://include-edu.gr>

Email: include.edu@gmail.com

FB: Include <https://www.facebook.com/Include-299639563413433/>

